



# OneMedia Essentials Pack

The OneMedia Essentials Packs are designed to give you all the material, support and tools you could need to get your ONELAN digital signage up and running, and to keep it fresh and updated. Managing your system has never been quicker or easier.

## The Packs can include:

- professional screen design
- ready-to-use content
- remote support
- equipment monitoring and
- swap-out warranties.



- ◆ Your identity
- ◆ Your messages
- ◆ Your content

**Professional Screen designs.**  
Customised or Bespoke

**Access to the OneMedia Free Content Portal:**  
anti bullying, healthy eating, wellbeing, clocks, weather, news & more...

**New Swap-out warranty**  
on your ONELAN product with status monitoring.

**onemedia**  
MANAGED DIGITAL SIGNAGE



# OneMedia Essentials Packs are tailored to your needs to include all - or any combination - of the following services:

## Design



OneMedia offers design as well as technology, and with this service our inhouse design studio will provide your organisation with bold, attractive and eye-catching artwork that not only reflects and compliments your brand, but is also easy to manage and update on the screen.

### Designs can be:

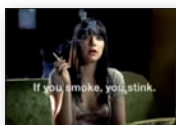
- **Customised** - based on templates that include your logo and reflect your branding in terms of image, style and colours.
- **Bespoke** - our designers work with your marketing department to create the specific design you have in mind.



## Content



OneMedia has a library of visual content for you to download and display on your digital signage systems. These cover a host of topics such as: healthy eating, road safety, anti-bullying and environmental awareness.



## Swap-out warranty



In the event of a hardware fault, a OneMedia courier will deliver a new or nearly-new replacement player and expect to collect the faulty one. This service even applies to most older players where the original ONELAN warranty has expired. Conditions apply.

## Monitoring service



With this service, your ONELAN players feed regular status updates to OneMedia, enabling staff at OneMedia to report to you immediately if any problems are detected. Problems might include your players:

- being turned off or disconnected when they should be in operation
- being out-of-date or missing content or
- experiencing a hardware fault.

This service does not require changes to your firewall or give us access to the player.

## Remote support



With your permission, staff at OneMedia are able to access your ONELAN players via a secure, capped, virtual private network. We can then assist you with your problem - both instantly and online. This service may require a rule on your firewall to allow us access, but does not give us access to anything else on your network.

## Essentials Packs – Comparison Chart

Services	Sub (Product code: ACS-EP1-COM)	Standard (Product code: ACS-EP2-COM)	Pro (Product code: ACS-EP3-COM)
Monitoring service	✓	✓	✓
Swap-out warranty	✓	✓	✓
Layout Design		Three customised designs	One bespoke design
Access to OneMedia's content portal		✓	✓
Remote support (if desired)			✓



### OneMedia Services Ltd

Andersen House, Newtown Road, Henley-on-Thames RG9 1HG

Tel: +44 (0)1491 576 713 Fax: +44 (0)1491 579 254

Email: [info@onemediaservices.com](mailto:info@onemediaservices.com) [www.onemediaservices.com](http://www.onemediaservices.com)